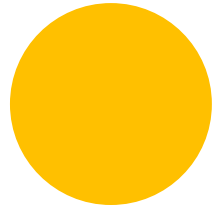
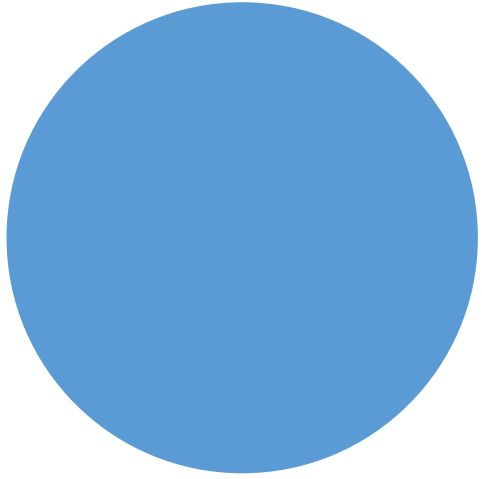


Smithsonian Affiliations Overview



Smithsonian Institution





Smithsonian Affiliations

The Smithsonian Institution is the world's largest museum, education, and research complex, with 19 museums and the National Zoo—shaping the future by preserving our heritage, discovering new knowledge, and sharing our resources with the world.

The Institution was founded in 1846 with funds from the Englishman James Smithson (1765–1829) according to his wishes “under the name of the Smithsonian Institution, an establishment for the increase and diffusion of knowledge.”



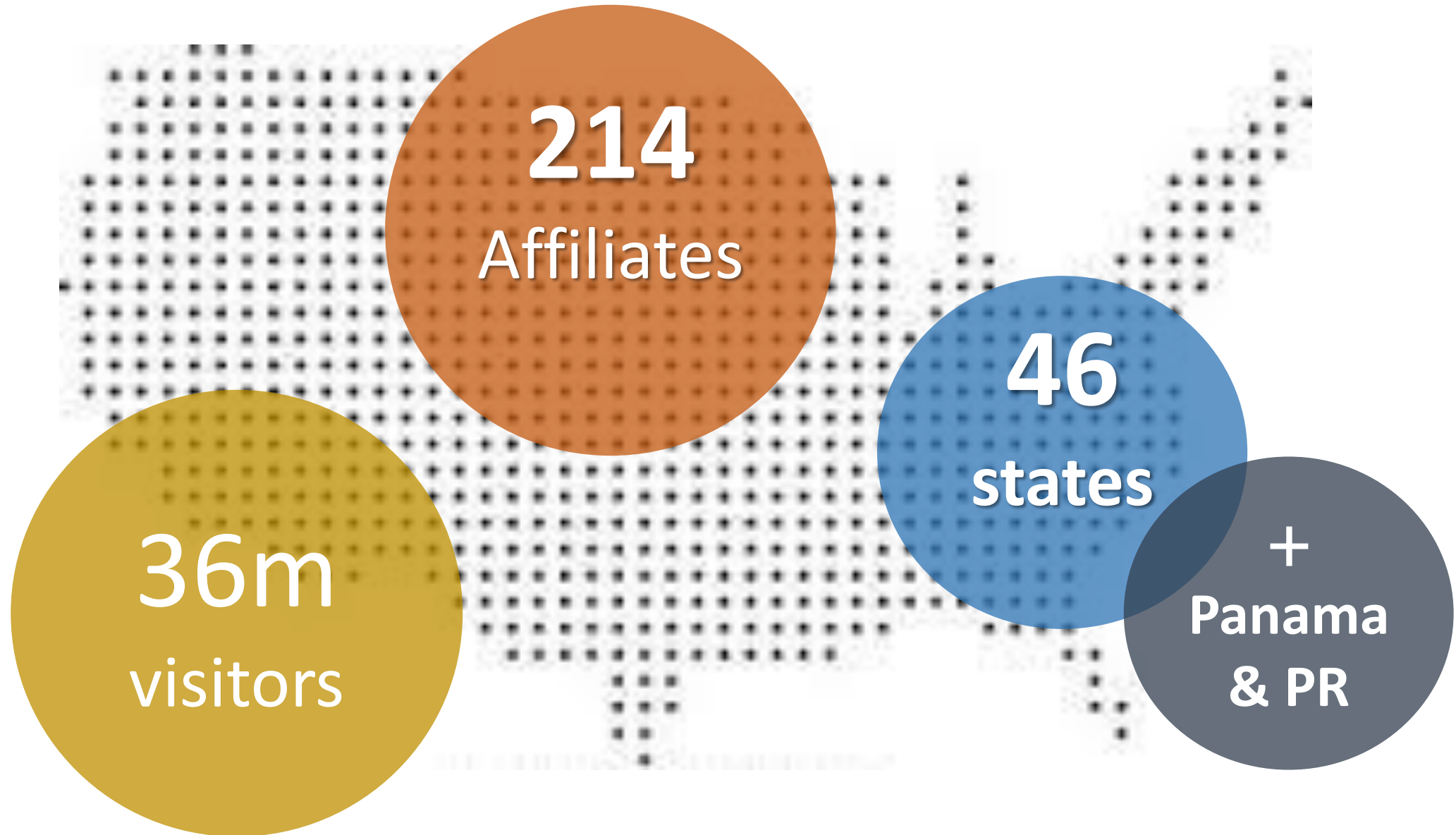
Smithsonian Affiliations

Smithsonian Affiliations develops long-term partnerships with museums and educational organizations to make Smithsonian collections and resources widely available. By sharing the Institution's resources with communities near and far, we create a greater impact on those we serve.

Together, SITES and Affiliations support the Smithsonian's mission by bringing its content, resources, and expertise to museums and museum-like organizations across the nation.



who are we?



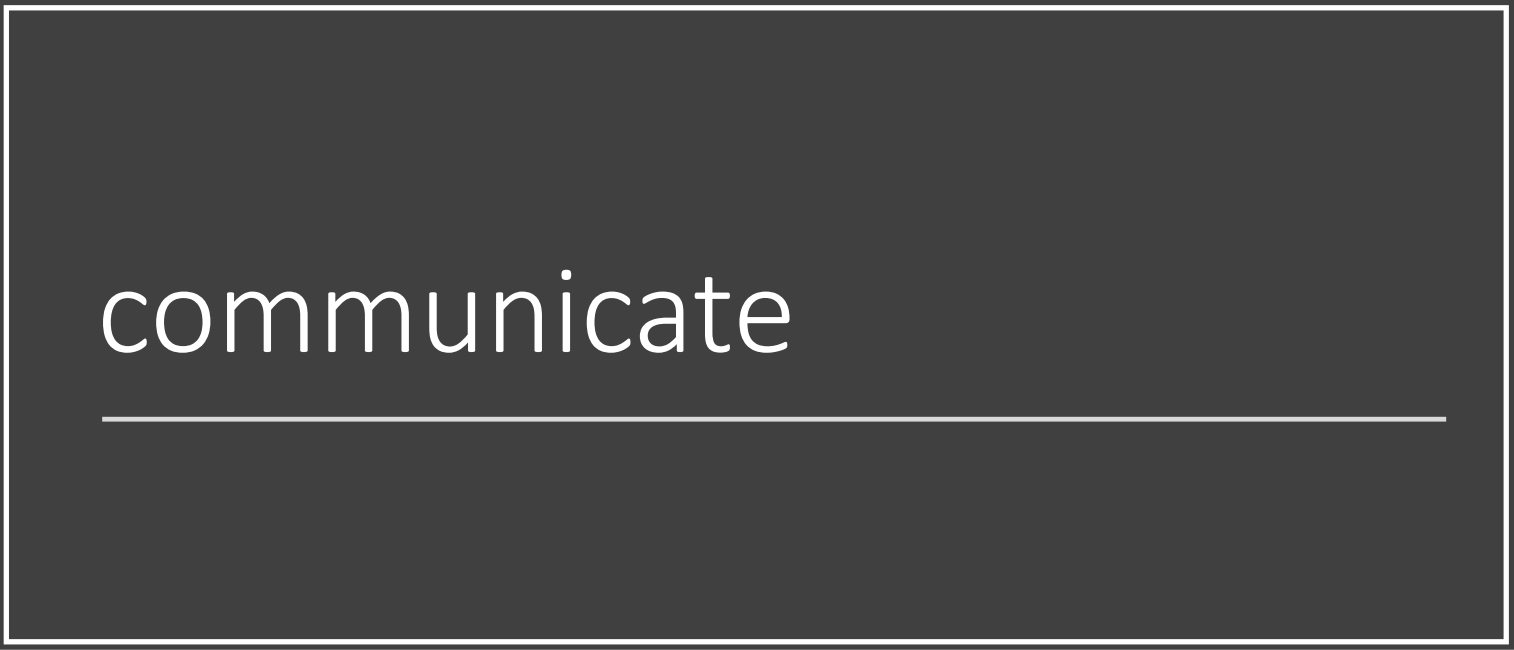
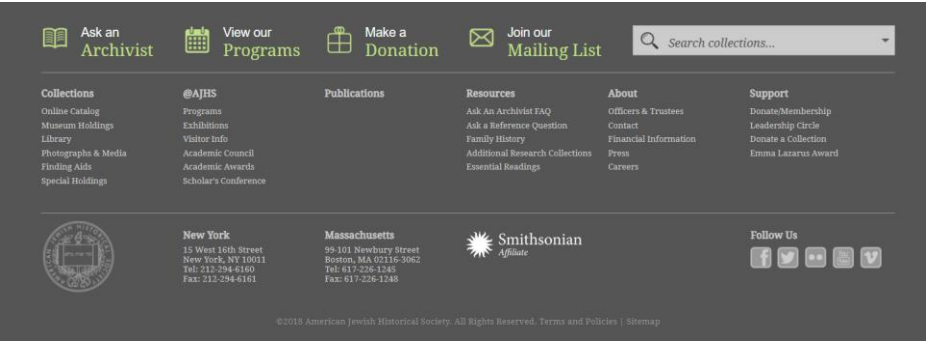


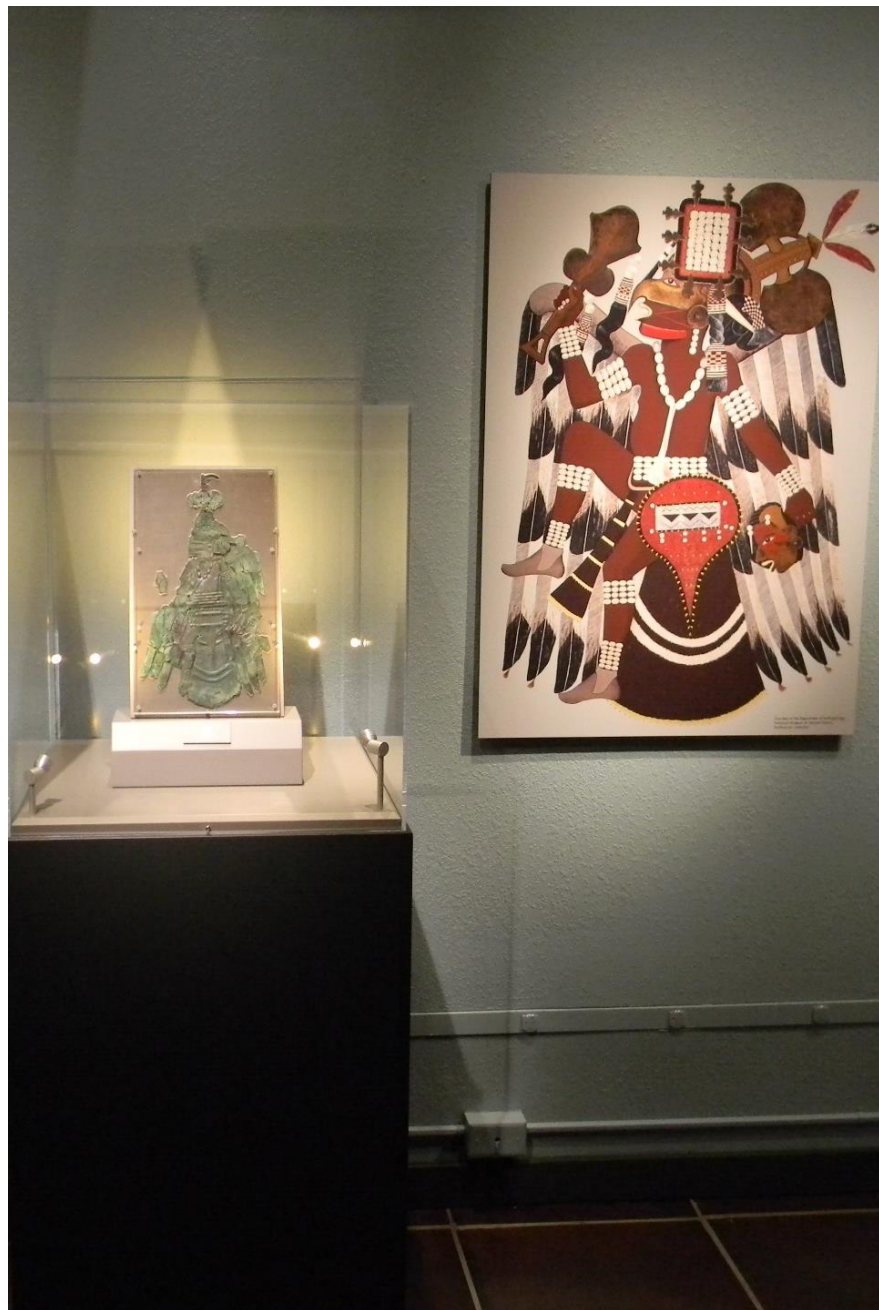
FY2018

1201
artifacts

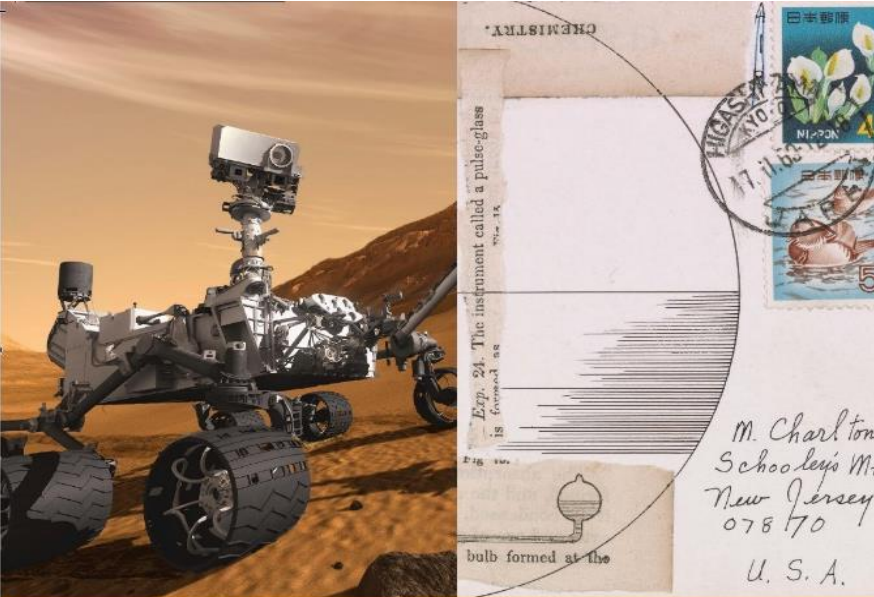
31
exhibitions

277
public
programs





showcase



Smithsonian Week in

collaborate



engage



commemorate



**MYTHS,
MEMORY,
and the
WILD WEST**

Custom drinks and activities with Wigle Whiskey

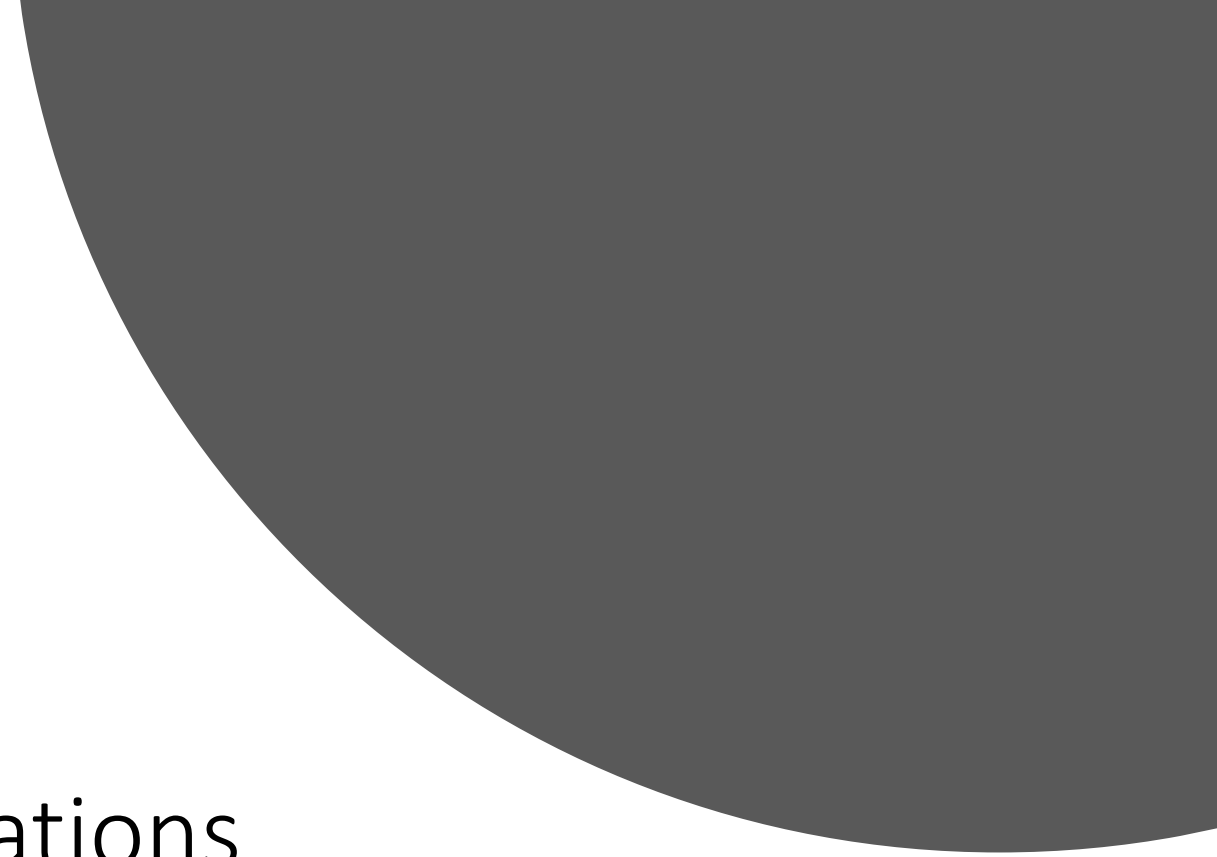
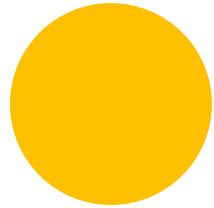
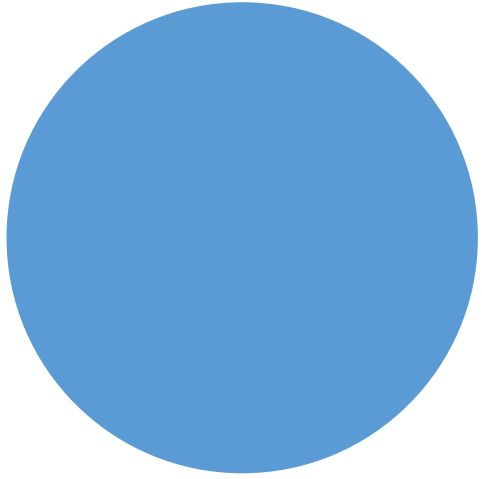
Panel discussion and Q&A with:

- ♣ **Michelle Delaney**, *Smithsonian Institution*
- ♦ **Jeremy Johnston**, *Buffalo Bill Museum*
- ♥ **Cécile R. Ganteaume**, *American Indian Museum*





study



Smithsonian Affiliations
Aaron Glavas
National Outreach Manager
glavsc@si.edu
202.633.5309